



JUNE 2020



SHOW HORSE COUNCIL
QUEENSLAND
NEWSLETTER

Show Horse Council QLD



20 May 2020

Dear Members

Just a little update on SHCQ and what's happening.

With the Covid 19 situation we thank you all for playing your part to help get this under control. It's difficult but it looks like things are slowly improving.

With the improvement comes hope. Hope that we can get back out there and showing again soon. Most would have guessed that our scheduled rising star show for June was unrealistic to keep this date.

Our intention would be to run these classes combined with HOTY so rest assured we haven't forgotten all the wonderful up and coming stars.

As for QCHC and HOTY we hope that we can bring one if not both of these shows. Our hands are somewhat tied depending on regulations and restrictions but the committee are working hard behind the scenes to have things ready to go as soon as it is safe to do so

Dates and venues may have to change. We hope not, but we will endeavour to get information out as soon as we can.

Life is likely to be a bit different from now on. There will be regulations placed and tightening of risk management but these measures are all the keep you safe.

Keep watching our facebook page for updates and we will also be sending emails as important information becomes available.

So stay safe and see you all soon.

Leonie Walsh
SHCQ 2020 President.
Email: president@shcq.com.au Mobile: 0414 893 843

SECRETARY DETAILS
PO Box 11
Landsborough, QLD, 4550
Ph: 0438 118 267
info@shcq.com.au

Thank you to all who attended the judges seminar!

We have had some wonderful feedback from those who logged in to the SHCA online judges seminar.

We know that those who attended gained some wonderful insight from the speakers!



GRAND NATIONAL REFUNDS

Those withdrawing their Grand National 2020 entry fees should now have been refunded. If you have not received your refund (and have not elected to have it roll over) please contact the SHCA office as there may be a problem with your bank details.

Thank you to all those members who either contacted us and/or agreed to have their entries rolled over to our next Grand National. SHCA will honour these entry fee prices for the next Grand National for those exhibitors.

For SHCA information the website www.showhorsecouncilaust.com.au is regularly updated with any announcements and events.

Lets Talk Teeth

FREQUENTLY ASKED QUESTIONS.

My horse doesn't turn well? Uneven when bending, uneven or no flexion to one or both sides, resists contact????

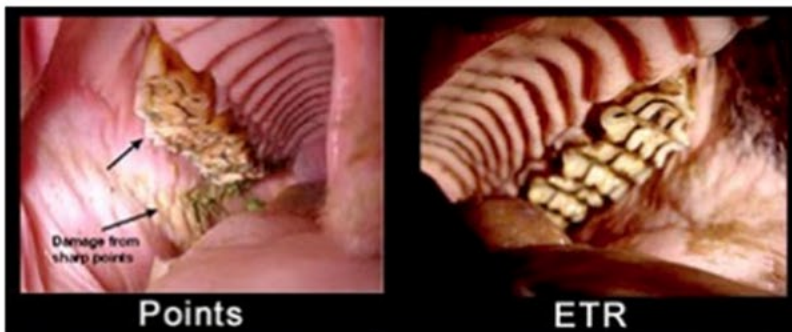
1 Is horse's dentistry up-to-date & bit fitted? {Image is of bit seat on 206-premolar} Often hooks on these teeth impinge on the action of the bit.



This image is of exaggerated hooks however surprisingly very common. They create huge issues with whole body welfare, particularly digestion/mastication and definitely issues with bits –contact/control. This condition is often mimicked at the back {311 & 411}.

Excessive Transverse Ridges ETR

This dental condition stops the jaw from moving in the necessary lateral movement for mastication & flexion. Though some ridging is necessary if too deep it stops the movement. Mastication becomes an up & down pattern which can create musculoskeletal issues.



Sharp Points & Pain

Most horses work through degrees of dental pain however it is often not corrected sufficiently. The sharp points on the cheek side[buccal] & lingual[lower tongue surface] are necessary for chewing however they must not be too sharp & uneven as they create issues which can often be misdiagnosed. Excessively sharp points can create lacerations and wounds in the mouth which affects whole wellbeing not just riding. After your dentist has visited-ask to see & feel the teeth-



Wolf Teeth

The Wolf teeth, first premolars are remnant teeth from horse's evolution and have no function. They directly impinge on the position of the Bit in the mouth. Some horses don't get them, some are big, pointy, small flat deep rooted or shallow but all are different. Bitted horses should have them extracted to ensure no interference with bit.



Article supplied by Nicole Graham - Equine Dental Technician at Performance Equine Dental, Supplier of PEDS bits



We want to thank our wonderful sponsors for their continued support!

Equimeds	Tyler Harris
Edwards Family	Michelle Hore
Manuel Equine Transport	BP Airconditioning
Adele Garraway	Australian Hunter Hack Association
Rachel Monaghan	Kayjae Performance Horses
Travis Fedrick Farrier	Elements Equestrian
Eden Park Show Horses	Dunwood Show Hunter Stud
Treymayne Stud	Barbara Barr
Mel Waller	BrighidCollins
Johnson Kim & Marlo	April Baxter
Hanley Park Stud	Travis Fedrick Farrier
Universal Stables	J Gartner Transport
Amanda Webb	Taylor Hirsch
Sarah Scotson	Gala Equine
Manor Hats	Cassandra Alaia
Sarah Hoolihan	Ridley Corporation
Kylie Barrow	Anthony Dingle
Horseland Sunshine Coast	Mackay Regional Equestrian
Alison Jamieson-Ryan	Kylie Raymont
Janie Hooper	Symphony Hill Stud
Armstrong Concreting	6 Bar Consulting
Teena Johnstone	Springs Earthmoving
Equissentials	Janie Hooper
Karen Morris	Toni Harper-Purcell
Hampton Park Equestrian	Julie Wildman
Georgia Fairweather	Edwards Family
One Horse 1 Health	Jakk Tanner
Judges Choice	Giddy Up Girl
Roger East	Milligan, Danni
Janelle Ware	Take the Reins Millinery
Leanne McDowall	PED Bits
Bravely Park (Jamine Hunt)	Kristen Bates-Taunton
	Local Search Digital Marketing



Please continue to support our generous sponsors.
Their support is much appreciated!